

GEODETSKI ZAVOD d.d. - SPLIT

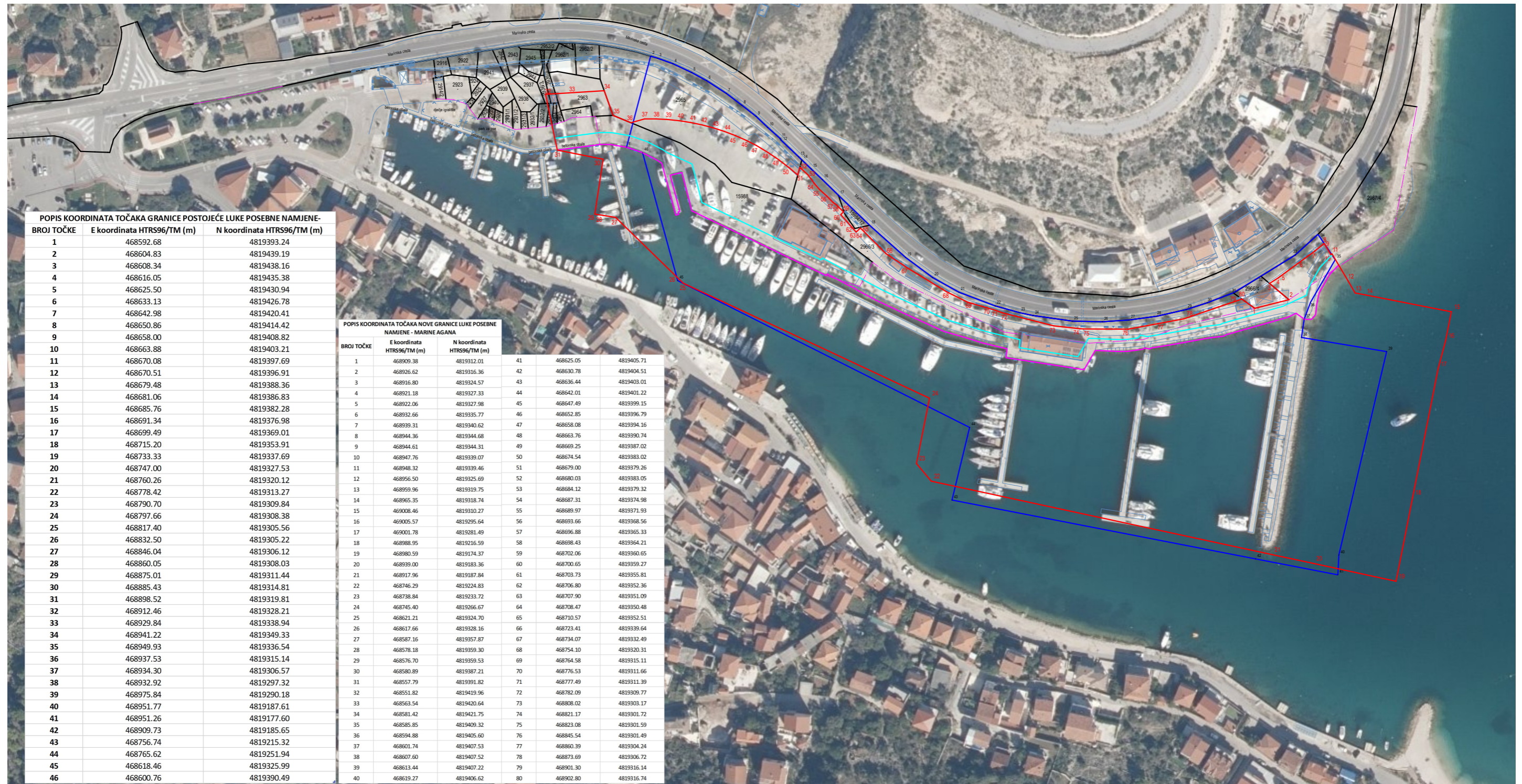
ZAVOD ZA PROJEKTIRANJE I IZVOĐENJE GEODETSKIH RADOVA
21 000 SPLIT, R. BOŠKOVIĆA 20, tel. 470-899, 470-911, fax. 470-937
OIB:65342447502

Investitor:
Jahting sport Agana d.o.o.
K.A.Stepinca 2, Marina

PRIJEDLOG FORMIRANJA GRANICE LUČKOG PODRUČJA PREKLOPLJEN NA DOF5/19

Mjerilo 1:2000

Katastarska općina: MARINA
MBR: 330728



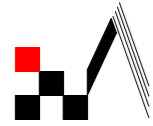
POPIS KOORDINATA TOČKA GRANICE POSTOJEĆE LUKE POSEBNE NAMJENE		
BROJ TOČKE	E koordinata HTRS96/TM (m)	N koordinata HTRS96/TM (m)
1	468592.68	4819393.24
2	468604.83	4819439.19
3	468608.34	4819438.16
4	468616.05	4819435.38
5	468625.50	4819430.94
6	468633.13	4819426.78
7	468642.98	4819420.41
8	468650.86	4819414.42
9	468658.00	4819408.82
10	468663.88	4819403.21
11	468670.08	4819397.69
12	468670.51	4819396.91
13	468679.48	4819388.36
14	468681.06	4819386.83
15	468685.76	4819382.28
16	468691.34	4819376.98
17	468699.49	4819369.01
18	468715.20	4819353.91
19	468733.33	4819337.69
20	468747.00	4819327.53
21	468760.26	4819320.12
22	468778.42	4819313.27
23	468790.70	4819309.84
24	468797.66	4819308.38
25	468817.40	4819305.56
26	468832.50	4819305.22
27	468846.04	4819306.12
28	468860.05	4819308.03
29	468875.01	4819311.44
30	468885.43	4819314.81
31	468898.52	4819319.81
32	468912.46	4819328.21
33	468929.84	4819338.94
34	468941.22	4819349.33
35	468949.93	4819356.54
36	468937.53	4819315.14
37	468934.30	4819306.57
38	468932.92	4819297.32
39	468975.84	4819290.18
40	468951.77	4819187.61
41	468951.26	4819177.60
42	468909.73	4819185.65
43	468756.74	4819215.32
44	468765.62	4819251.94
45	468618.46	4819325.99
46	468600.76	4819390.49

POPIS KOORDINATA TOČKA NOVE GRANICE LUKE POSEBNE NAMJENE - MARINE AGANA					
BROJ TOČKE	E koordinata HTRS96/TM (m)	N koordinata HTRS96/TM (m)			
1	468909.38	4819312.01	41	468625.05	4819405.71
2	468926.62	4819316.36	42	468630.78	4819404.51
3	468916.80	4819324.57	43	468636.44	4819403.01
4	468921.18	4819327.33	44	468642.01	4819401.22
5	468922.06	4819327.98	45	468647.49	4819399.15
6	468932.66	4819335.77	46	468652.85	4819396.79
7	468939.31	4819340.62	47	468658.08	4819394.16
8	468944.36	4819344.68	48	468663.76	4819390.74
9	468944.61	4819344.31	49	468669.25	4819387.02
10	468947.76	4819339.07	50	468674.54	4819383.02
11	468948.32	4819339.46	51	468679.00	4819379.26
12	468956.50	4819325.69	52	468680.03	4819383.05
13	468959.96	4819319.75	53	468684.12	4819379.32
14	468965.35	4819318.74	54	468687.31	4819374.98
15	469008.46	4819310.27	55	468689.97	4819371.93
16	469005.57	4819295.64	56	468693.66	4819368.56
17	469001.78	4819281.49	57	468696.88	4819365.33
18	468988.95	4819216.59	58	468698.43	4819364.21
19	468980.59	4819174.37	59	468702.06	4819360.65
20	468939.00	4819183.36	60	468700.65	4819359.27
21	468917.96	4819187.84	61	468703.73	4819355.81
22	468746.29	4819224.83	62	468706.80	4819352.36
23	468738.84	4819233.72	63	468707.90	4819351.09
24	468745.40	4819266.67	64	468708.47	4819350.48
25	468621.21	4819324.70	65	468710.57	4819352.51
26	468617.66	4819328.16	66	468723.41	4819339.64
27	468587.16	4819357.87	67	468734.07	4819332.49
28	468578.18	4819359.30	68	468754.10	4819320.31
29	468576.70	4819359.53	69	468764.58	4819315.11
30	468580.89	4819387.21	70	468776.53	4819311.66
31	468557.79	4819391.82	71	468777.49	4819311.39
32	468551.82	4819419.96	72	468782.09	4819309.77
33	468563.54	4819420.64	73	468808.02	4819303.17
34	468581.42	4819421.75	74	468821.17	4819301.72
35	468585.85	4819409.32	75	468823.08	4819301.59
36	468594.88	4819405.60	76	468845.54	4819301.49
37	468601.74	4819407.53	77	468860.39	4819304.24
38	468607.60	4819407.52	78	468873.69	4819306.72
39	468613.44	4819407.22	79	468901.30	4819316.14
40	468619.27	4819406.62	80	468902.80	4819316.74

Izradio/la:
Marina Kalaš, mag. ing. geod. et. geoinf.
Split, kolovoz 2023. godine
Broj elaborata: 33/23

- stara granica pomorskoga dobra određena Rješenjem (Klasa: UPI-342-01/13-01/19, Urbroj: 530-03-1-2-13-2) od 04. studenog 2013. godine
- prijedlog nove granice lučkog područja sukladno Izmjenama i dopunama dpu luke i nautičkog centra s obalnim pojansom u Marini
- linija SWV
- linija 6 metara od SWV-a
- katastarsko stanje
- topografsko stanje

Odgovorna osoba za obavljanje stručnih
geodetskih poslova
Angela Mrša, dipl. ing. geod.
na
Mrša
Date:
2024.01.23
13:44:24 +01'00'



GEODETSKI ZAVOD d.d. - SPLIT

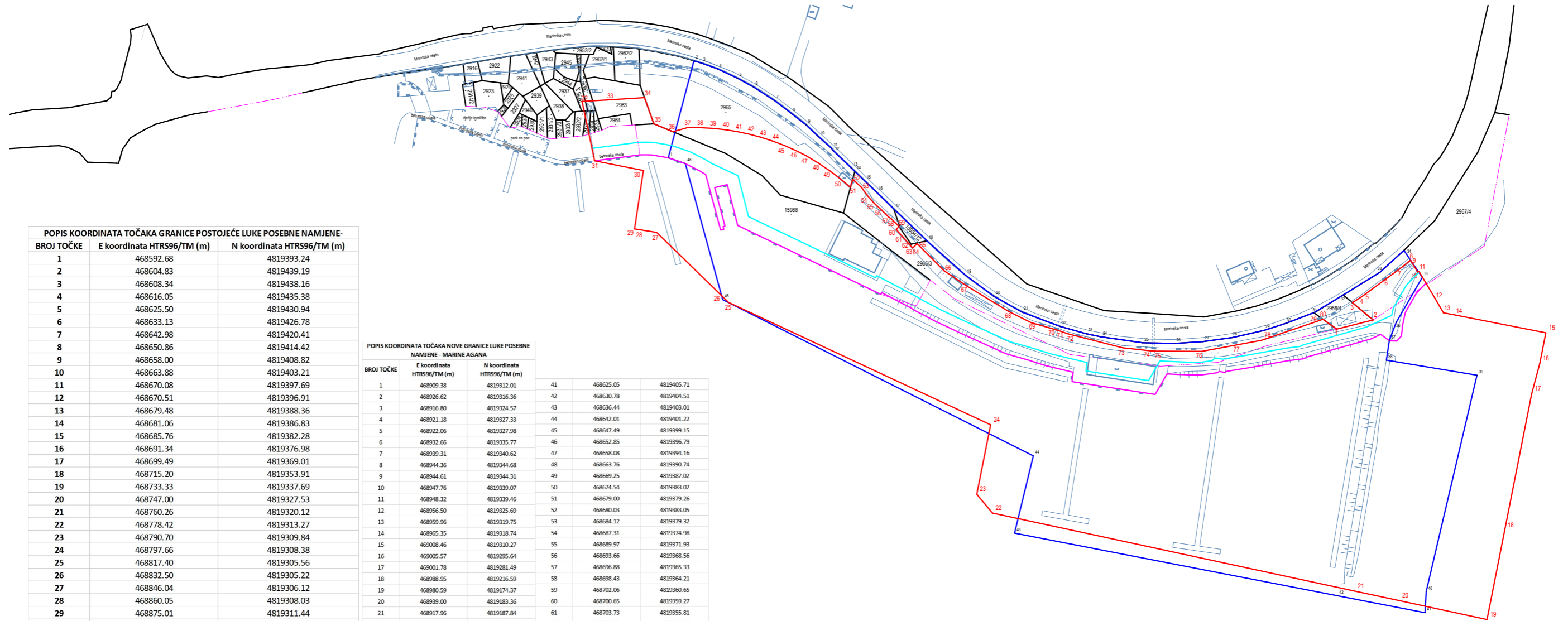
ZAVOD ZA PROJEKTIRANJE I IZVOĐENJE GEODETSKIH RADOVA
21 000 SPLIT, R. BOŠKOVIĆA 20, tel. 470-899, 470-911, fax. 470-937
OIB:65342447502

Investitor:
Jahting sport Agana d.o.o.
K.A.Stepinca 2, Marina

PRIJEDLOG FORMIRANJA GRANICE LUČKOG PODRUČJA

Katastarska općina: MARINA
MBR: 330728

Mjerilo 1:2000



POPIS KOORDINATA TOČAKA GRANICE POSTOJEĆE LUKE POSEBNE NAMJENE -

BROJ TOČKE	E koordinata HTRS96/TM (m)	N koordinata HTRS96/TM (m)
1	468592.68	4819393.24
2	468604.83	4819439.19
3	468608.34	4819438.16
4	468616.05	4819435.38
5	468625.50	4819430.94
6	468633.13	4819426.78
7	468642.98	4819420.41
8	468650.86	4819414.42
9	468658.00	4819408.82
10	468663.88	4819403.21
11	468670.08	4819397.69
12	468670.51	4819396.91
13	468679.48	4819388.36
14	468681.06	4819386.83
15	468685.76	4819382.28
16	468691.34	4819376.98
17	468699.49	4819369.01
18	468715.20	4819353.91
19	468733.33	4819337.69
20	468747.00	4819327.53
21	468760.26	4819320.12
22	468778.42	4819313.27
23	468790.70	4819309.84
24	468797.66	4819308.38
25	468817.40	4819305.56
26	468832.50	4819305.22
27	468846.04	4819306.12
28	468860.05	4819308.03
29	468875.01	4819311.44
30	468885.43	4819314.81
31	468898.52	4819319.81
32	468912.46	4819328.21
33	468929.84	4819338.94
34	468941.22	4819349.33
35	468949.93	4819336.54
36	468937.53	4819315.14
37	468934.30	4819306.57
38	468932.92	4819297.32
39	468975.84	4819290.18
40	468951.77	4819187.61
41	468951.26	4819177.60
42	468909.73	4819185.65
43	468756.74	4819215.32
44	468765.62	4819251.94
45	468618.46	4819325.99
46	468600.76	4819390.49

POPIS KOORDINATA TOČAKA NOVE GRANICE LUKE POSEBNE NAMJENE - MARINE AGANA

BROJ TOČKE	E koordinata HTRS96/TM (m)	N koordinata HTRS96/TM (m)	BROJ TOČKE	E koordinata HTRS96/TM (m)	N koordinata HTRS96/TM (m)
1	468909.38	4819312.01	41	468625.05	4819405.71
2	468926.62	4819316.36	42	468630.78	4819404.51
3	468916.80	4819324.57	43	468636.44	4819403.01
4	468921.18	4819327.33	44	468642.01	4819401.22
5	468922.06	4819327.98	45	468647.49	4819399.15
6	468932.66	4819335.77	46	468652.85	4819396.79
7	468939.31	4819340.62	47	468658.08	4819394.16
8	468944.36	4819344.68	48	468663.76	4819390.74
9	468944.61	4819344.31	49	468669.25	4819387.02
10	468947.76	4819339.07	50	468674.54	4819383.02
11	468948.32	4819339.46	51	468679.00	4819379.26
12	468956.50	4819325.69	52	468680.03	4819383.05
13	468959.96	4819319.75	53	468684.12	4819379.32
14	468965.35	4819318.74	54	468687.31	4819374.98
15	469008.46	4819310.27	55	468689.97	4819371.93
16	469005.57	4819295.64	56	468693.66	4819368.56
17	469001.78	4819281.49	57	468696.88	4819365.33
18	468988.95	4819216.59	58	468698.43	4819364.21
19	468980.59	4819174.37	59	468702.06	4819360.65
20	468939.00	4819183.36	60	468700.65	4819359.27
21	468917.96	4819187.84	61	468703.73	4819355.81
22	468746.29	4819224.83	62	468706.80	4819352.36
23	468738.84	4819233.72	63	468707.90	4819351.09
24	468745.40	4819266.67	64	468708.47	4819350.48
25	468621.21	4819324.70	65	468710.57	4819352.51
26	468617.66	4819328.16	66	468723.41	4819339.64
27	468587.16	4819357.87	67	468734.07	4819332.49
28	468578.18	4819359.30	68	468754.10	4819320.31
29	468576.70	4819359.53	69	468764.58	4819315.11
30	468580.89	4819387.21	70	468776.53	4819311.66
31	468557.79	4819391.82	71	468777.49	4819311.39
32	468551.82	4819419.96	72	468782.09	4819309.77
33	468563.54	4819420.64	73	468808.02	4819303.17
34	468581.42	4819421.75	74	468821.17	4819301.72
35	468585.85	4819409.32	75	468823.08	4819301.59
36	468594.88	4819405.60	76	468845.54	4819301.49
37	468601.74	4819407.53	77	468860.39	4819304.24
38	468607.60	4819407.52	78	468873.69	4819306.72
39	468613.44	4819407.22	79	468901.30	4819316.14
40	468619.27	4819406.62	80	468902.80	4819316.74

Izradio/la:
Marina Kalaš, mag. ing. geod. et. geoinf.
Split, kolovoz 2023. godine
Broj elaborata: 33/23

- stara granica pomorskoga dobra određena Rješenjem (Klasa: UP/I-342-01/13-01/19, Urbroj: 530-03-1-2-13-2) od 04. studenog 2013. godine
- prijedlog nove granice lučkog područja sukladno Izmjenama i dopunama dpu luke i nautičkog centra s obalnim pojansom u Marini
- linija SWV
- linija 6 metara od SWV-a
- katastarsko stanje
- topografsko stanje

Odgovorna osoba za digitalni signature
geodet: Marina Kalaš
Angelina Mrša, dipl.ing.geod.
Date:
2024.01.23
13:44:02 +01'00'